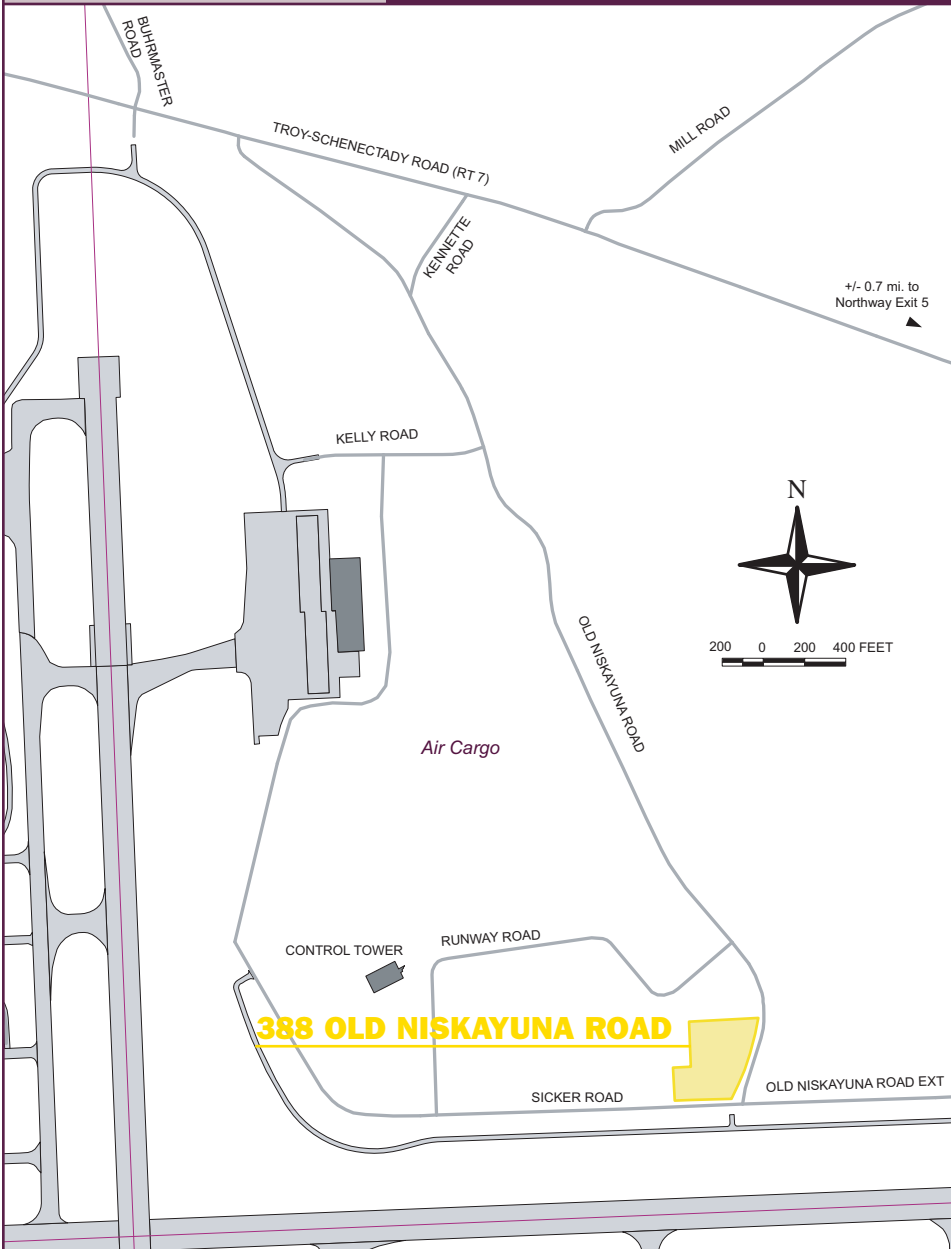


388

388 OLD NISKAYUNA ROAD, LATHAM NY 12110

BUILD-TO-SUIT ON 2.4 ACRES



Cleared lot is ideal for aviation related business with close proximity to the Airport. Airport Authority will build-to-suit and lease the facility or a land lease is available.

GENERAL

- **Description:** 2.4 acres
- **Location:** Northeast quadrant
- **Terms:** NNN lease, price based on build-out
- **Zoning:** Industrial F
- **Availability:** Immediately available

UTILITIES

- **Electric:** Niagara Mohawk, A National Grid Company (on site)
- **Gas:** Niagara Mohawk, A National Grid Company (on site)
- **Water:** Town of Colonie (on site)
- **Sewer:** Town of Colonie (450 ft.)
- **Telecommunications:** Various

ACCESS

- **Highway:** Route 7/Troy-Schenectady Road (0.75 miles)
- **Interstate:** I-87/Northway (1.0 mile), I-90 (3.0 miles)
- **Distance to Airport:** 0.75 miles

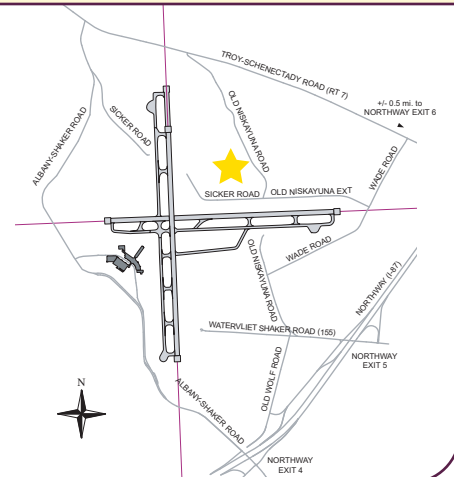


Albany International Airport | Albany County Airport Authority

Administration Building, Suite 200 | Albany, NY 12211

Telephone: 518.242.2247 | Fax: 518.242.2641 | Email: development@albanyairport.com

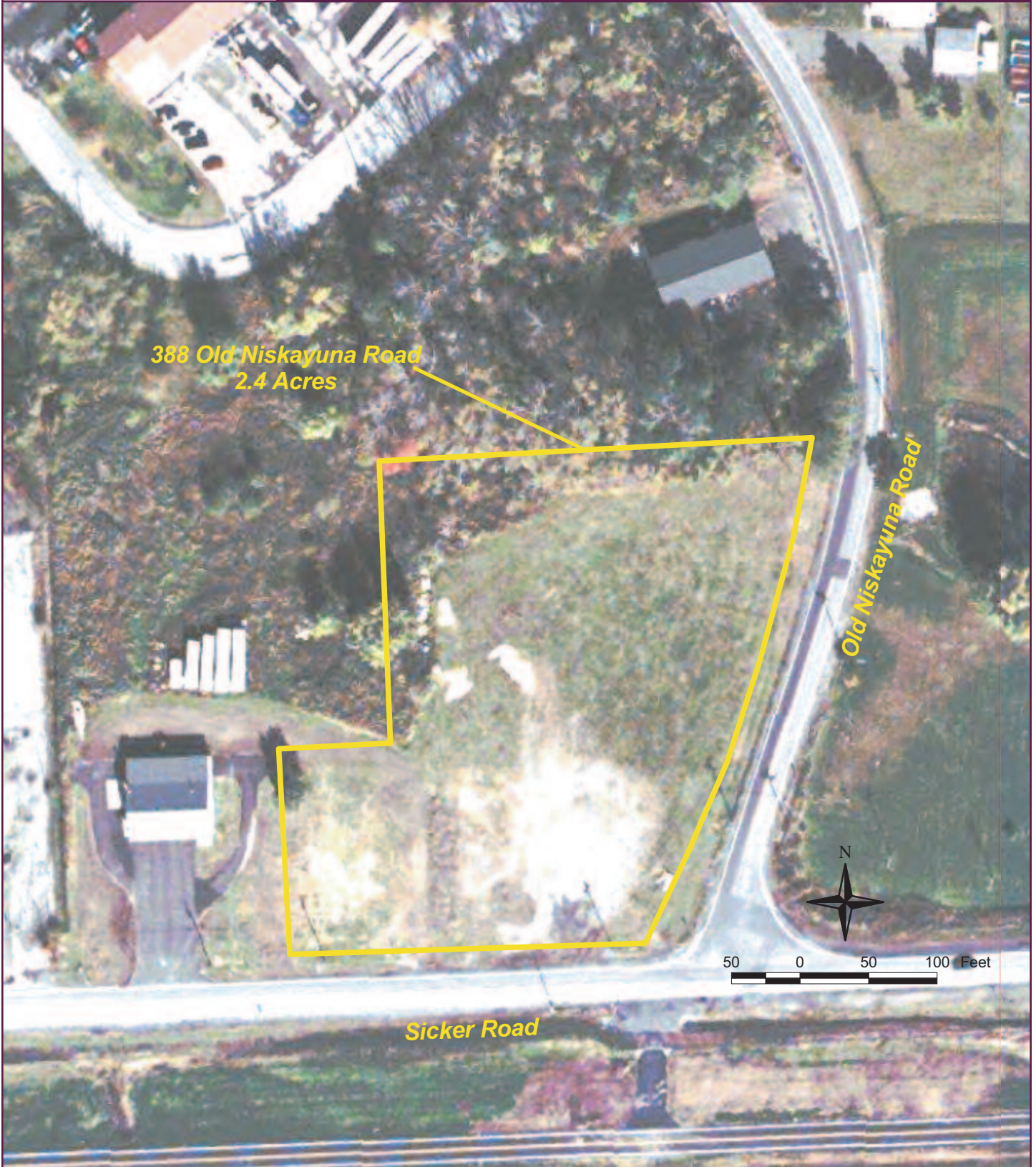
www.albanyairport.com



388

388 OLD NISKAYUNA ROAD, LATHAM NY 12110

BUILD-TO-SUIT ON 2.4 ACRES



*388 Old Niskayuna Road
2.4 Acres*

Old Niskayuna Road

Sicker Road

